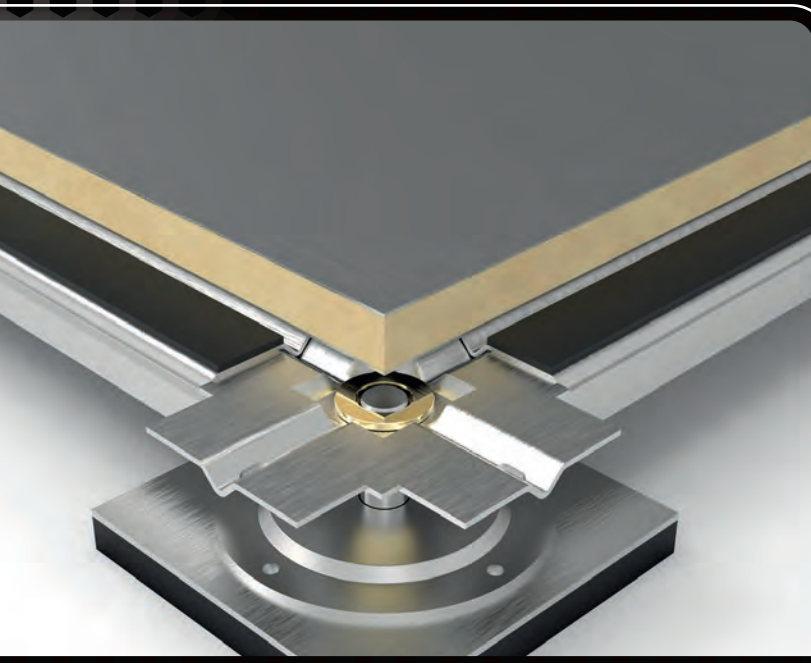




IGNIFLOOR®



PRODUCT DESCRIPTION

IGNIFLOOR is a lightweight structural sandwich panel: combined with **FLY** floor frame you have a complete floating floor system, specific for yacht weighting less than 10 kg per square meter.

USES

A) THICKNESSES UP TO 16 mm

As a floor covering panel and surface material with low flame-spread qualities.

B) THICKNESSES UP TO 12,5 mm

As a ceiling panel and bulkhead finishing panel; finishing material for all exposed interior and concealed or inaccessible surfaces.

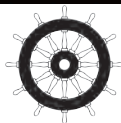
PANEL STRUCTURE

THICKNESS RANGE	6,5 mm ÷ 16 mm
STANDARD DIMENSIONS	600x600 mm / 600x1200 mm / 1200x1200 mm / 1200x2400 mm
OTHER SIZES	available on request
EXTERNAL LAYERS	aluminum foil
CORE MATERIAL	Rigid foam (different colors)
WEIGHT	5,9 kg/m ² [16 mm]

TECHNICAL AND SAFETY INFORMATION

PROCESSING	cutting with standard carpentry tools
INSULATING MATERIAL	non-toxic, not dangerous for human health, skin protection not necessary

The information can change without notice and without responsibility for Biquadro Srl.



RINA MED Module B Certificate n. MED130916CS

Low flame-spread material according to IMO Res. MSC.307(88)-(2010 FTP Code)
Surface materials and floor coverings with low flame-spread characteristics; (a) decorative veneers.



Biquadro s.r.l. – Marine division

Address · via Quinta Strada, 15 · 35023 Bagnoli di Sopra (Padova) - Italia

Phone +39 049 9535360 · e-mail marine@biquadro.net

www.biquadromarine.net